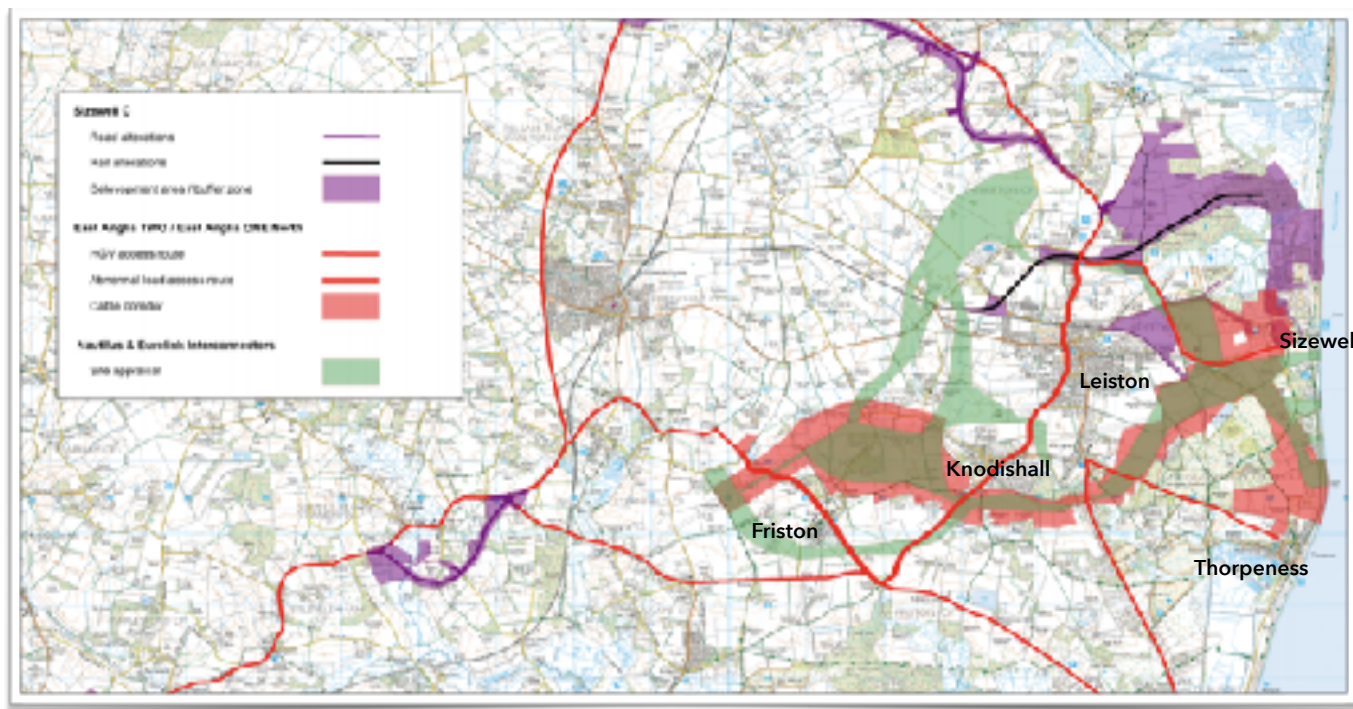


COMMUNITY ACTION



ENERGY COMPANIES THREATEN EAST SUFFOLK

The map shows the scale and reach of the energy developments which, if unchallenged, will envelop our communities on the Suffolk Coast from Minsmere to Aldeburgh and across to Friston. These proposals could result in years of disruption, with a legacy of our communities being surrounded by cable routes and massive energy substation complexes.

PLEASE SPREAD THE WORD ABOUT THE ENERGY PROJECTS PROPOSED IN OUR AREA, IT IS VITAL THE VOICES OF OUR COMMUNITIES ARE HEARD

We must all make it clear that the energy proposals for this area are not acceptable to our communities. We now know it is not just Scottish Power (SPR) who are proposing industrialisation of the East Suffolk countryside. NGV (National Grid Ventures) & National Grid also require cable routes and substations for their European Inter-connectors 'Nautilus' & 'Eurolink'. EDF are in final consultations for Sizewell Cx2 and we have also learnt that Galloper & Greater Gabbard (existing offshore wind farms) propose extensions which could result in further cabling and onshore substations. Construction of these projects would overlap exacerbating disruption to the daily lives of residents, tourists and local businesses.

On the reverse of this newsletter you will find resources to help you make a response to Scottish Powers 'Phase 4 Consultation' and website links with resources about the other energy proposals.

Scottish Power have not provided feedback forms for this consultation, instead we urge you to write to Scottish Power with your comments, sending copies to our Local Authorities, MP (Therese Coffey), The Planning Inspectorate & Energy Minister (Greg Clark).



LETTER GUIDE EA1N & EA2 - Scottish Power Onshore Development Proposals**Start your letter along the following lines:**

...as a local resident & member of the local community. I would like to register that I am completely against Scottish Powers 'onshore' development proposals for EA1N & EA2 wind farm projects. These projects will cause unacceptable damage and disruption to our local communities and Suffolk Coast & Heaths AONB (a nationally protected landscape, essential to tourism in the area). Early stage consultation for both projects was poorly managed, communications were inadequate and misleading. Failures in scoping, consultation and discrepancies in RAG methodology at the early stages, resulted in unfair & inconsistent onshore site appraisal. These failures by the developer led to a poor choice of sites for onshore development. Scottish Power also failed to identify or consider a single brownfield option for their permanent onshore development requirements.

Grove Wood, Friston - SPRs proposals to locate onshore substations north of Friston are unacceptable on the following grounds:

- Substations are too big and too close to a small rural village, development will be just a few hundred metres from the closest residents homes and there are at least 4 listed buildings within 350m of substations, including the village church.
- Friston has historic flooding attributable to the land on which SPRs & National Grids substations could be built. The flood assessment and proposal to use collection ponds with controlled runoff into the village drainage is not an acceptable solution to the increased flood risk posed by this development.
- Scottish Power has failed to take on board the views & concerns of the residents of Friston and those of the communities along the proposed cable route. SPR have also failed to acknowledge the local authorities and the local MP who have all publicly denounced Friston as unsuitable & the wrong location for onshore substations.
- These proposals if allowed to proceed will set a precedent for industrial scale development in a rural landscape. The proximity to a small village is unprecedented when looking at other projects which all embed a buffer zone of at least 500m between substation complexes and residential properties.
- SPRs proposals require the longest, most disruptive, cable route with 6 miles of cables dug through the AONB, fields and roads in trenches up to 50 metres wide.
- Construction traffic and proposed access via minor roads and by-ways is too disruptive and poses an unacceptable increase in danger to the lives of locals and visitors (motorists, cyclists, walkers, horse riders etc)
- SPR have failed to adequately consider the cumulative 'combined' impact with other energy proposals (Sizewell C, National Grid, NGV Inter-connectors), all huge industrial projects which could be in construction at the same time.
- Negative economic benefit locally, onshore development provides '0' full time permanent jobs at substations as they are unmanned and remotely controlled.
- SPR would not have required additional cable routes or substations had their Bawdsey to Bramford cable route been managed correctly. Further requirement for rural development close to the Suffolk Coast is not acceptable given the Bawdsey to Bramford cable route and substations could and should have accommodated all SPRs wind farm projects & output. Scottish Power must be held to task about this by the Planning Inspectorate.

Also include your own personal circumstances, comments and arguments you feel you should make to the documentation and details released by SPR in Phase 4.

Send your letters to: (you can also find a list of emails at SASES.ORG.UK on the 'Get Involved' page.

Scottish Power Renewables EA2 & EA1N
RTLY-RLGH-GKSE
FREEPOST
25 Priestgate
Peterborough
PE1 1JL

eastangliaonenorth@scottishpower.com
eastangliatwo@scottishpower.com

enquiries@beis.gov.uk (Attention of Greg Clark & Claire Perry)
EastAngliaTwo@pins.gsi.gov.uk
EastAngliaOneNorth@pins.gsi.gov.uk
therese.coffey.mp@parliament.uk
naomi.goold@eastsoffolk.gov.uk
john.pitchford@suffolk.gov.uk
saveeastsoffolk@outlook.com